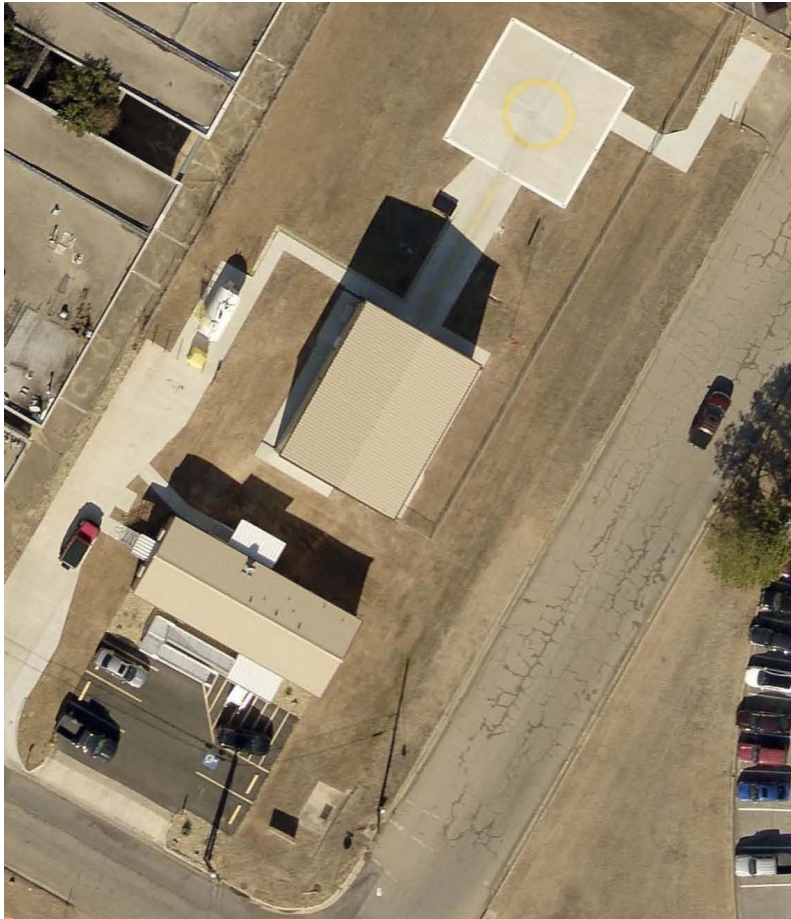


## Air Evac EMS, Inc. New Air Evac Lifeteam Base at Paris Regional Medical Center, Paris, Texas



Air Evac constructed a helicopter pad/hangar for the Paris Regional Medical Center. Top photo shows an aerial view and layout of the site. Bottom left photo is the new hangar building and photo on the right is the new modular office building.

Hayter Engineering provided plans for site/drainage, grading/paving, erosion control, water & sewer site plan, and design plans and specifications. Construction review included a review of the structural steel for the hangar building, and tie-downs for the modular office building.

This project was completed in 2017.

### CLIENT

Air Evac EMS, Inc.

### CONTACT

Mike Kelly, B.S., Facilities Manager  
Telephone: (417) 257-1468  
Email: [Michael.Kelly@air-evac.com](mailto:Michael.Kelly@air-evac.com)

### CONSTRUCTION COST

### SERVICES PROVIDED

Site & Drainage Plan  
Grading & Paving Plan  
Erosion Control Plan  
Handicap Accessibilty Plan  
Water & Sewer Site Plan  
Hydrant Flow Test  
Project Area Map  
Design Plans & Specifications  
Materials Testing  
Construction Review

Hayter Engineering, Inc. is a civil and environmental infrastructure firm serving the public and private sectors through a commitment to long-term client partnerships for over 60 years.